

## Real Time Standalone DVR

### 8CH Pentaplex DVR (K 0824)



- Pentaplex Operating Mode
- Built-in Web Server MPEG4 ASP
- Network Capable (Static IP, DHCP, DDNS)
- Back-up via USB2.0 memory stick
- Various PTZ Protocol Support
- Support VGA / S-Video / Spot Monitor Output Mode
- Records and Plays in High-definition Video
- Audio Recording and Playback (2-Way Audio Conference)
- Network Time Protocol (NTP)
- IR Remote Controller and USB2.0 mouse control
- CMS (Central Monitoring Station)
- Web-Client



### 16CH Pentaplex DVR (Q 1648)

## CMS Features

- Up to X 64 Channel Display
- Remote Multi Site Control
- Remote PTZ Control
- Health Check System
- Remote Setup (Configuration)
- Remote Event Search Engine
- Remote Date/Time Search Engine
- 2-Way Audio (Bi-Directional)
- Local Recording (NVR Function)
- Local Playback
- Archiving (EXE/JPEG File Format)
- Remote Alarm Out Control
- Remote Log Display
- Remote Camera Color Adjustment
- WCS (Watermark Check System)
- E-MAP
- Software Upgrade via USB Port, CD/DVD-RW
- Email-Notification (Still Image, Video Clip)

### CMS GUI Screen

- CMS Watch PTZ Screen
- CMS Health Check Screen
- CMS Remote Search Screen



- CMS Remote Event Screen



- CMS Remote Setup Screen

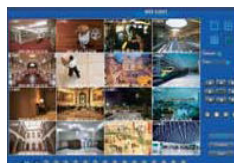


## Web Client Features

- Multi Channel Display
- PTZ Control
- Live Monitoring
- Freeze Function
- Channel and Camera Number Display

### Server GUI Screen

- Server Main Screen

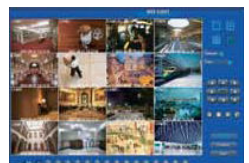


- Server Sub Screen



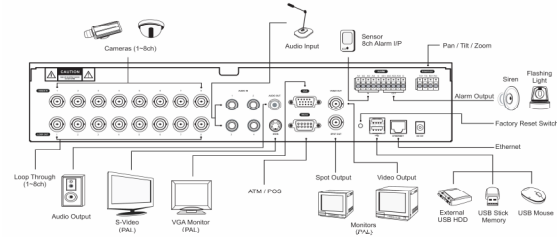
### Web Client Screen

- Web Client Main Screen

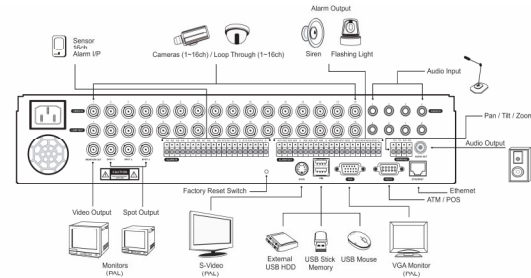


## System Configuration

### 8 CHANNEL

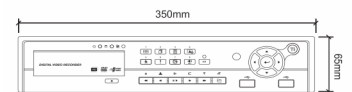
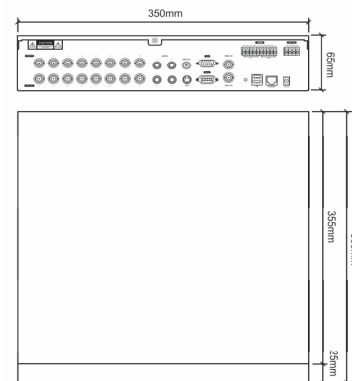


### 16 CHANNEL

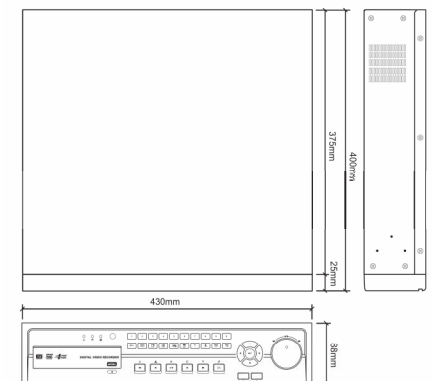
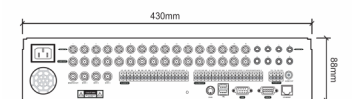


## Dimension

### 8 CHANNEL



### 16 CHANNEL



	K0824	Q1648
Compression	Advanced MPEG4 ASP	
Signal Format	NTSC or PAL (Auto Selected)	
Video Input	Composite 8 BNC Inputs	Composite 16 BNC Inputs
Video Output	Composite : 1 (1Vp-p, 75 Ohm)	
Loop Output	8 BNC Looping Outputs	16 BNC Looping Outputs
Spot Output	1 BNC	3 BNC
SVHS Output	1 (SVHS)	
VGA Output	1 (VGA – 1024 x 768 @ 60Hz, True XGA Resolution)	
Display Resolution	704 x 576, 704 x 288, 352 x 288 (PAL)	
Recording Resolution	704 x 576, 704 x 288, 352 x 288 (PAL)	
Recording MAX Frame Rate	352 x 288 : 200FPS (PAL)	352 x 288 : 400FPS (PAL)
Playback MAX Frame Rate	352 x 288 : 200FPS (PAL)	352 x 288 : 200FPS (PAL)
Audio Input	4 Inputs (RCA Jack)	8 Inputs (RCA Jack)
Audio Output	1 Output (RCA Jack)	
Ethernet	10 / 100Mbps Ethernet (RJ-45)	
PTZ Control	RS-485/422 Serial Port 1 (Terminal Block)	
Alarm Input	4 (TTL) Programmable as NC/NO	16 (TTL) Programmable as NC/NO
Alarm Output	4 (TTL) Programmable as NC/NO	16 (TTL) Programmable as NC/NO
USB Port	4 x USB (2 x Front Panel, 2 x Rear panel)	
Recording Qualities	Super / High / Standard	
Recording Modes	Schedule / Alarm / Motion / Emergency	
Pre-Alarm Recording	Up to 3,600 Seconds / User Programmable	
Motion Detection	Yes (22 x 15)	
Playback Speed	X1, X2, X4, X8, X16, X32, X64, Extrema	
Archive File Format	EXE(Video) / JPEG(Still Image)	
NTP Server	Yes	
GMT Time Zone	Yes	
Auto DST	Yes	
Multi Language	English / Danish / Chinese / Japanese / Korean / Italian / French / Portuguese	
Operating System	Embedded Linux	
OS Firmware	Linux OS in Flash Memory	
Emergency Recording Key	Yes	
Primary Storage	EIDE Hard Disk Drive (up to 2)	EIDE Hard Disk Drive (up to 4+0 or 3+1)
Dimension (WxHxD)	350mm x 65mm x 380mm	430mm x 88mm x 400mm
	13.78inch x 2.56inch x 14.96inch	16.93inch x 3.46inch x 15.75inch
Operating Temperatures	5°C~40°C / 41°F~104°F	
Power Adapter	Free Voltage 12VDC, 5A	100 to 240 VAC, 1/2A, 50~60Hz
Power Consumption	Max 40W	Max 90W